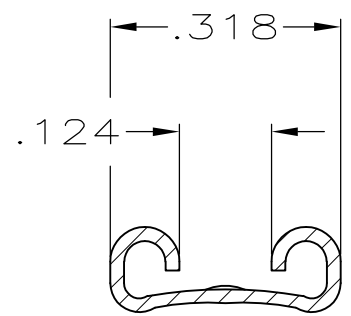
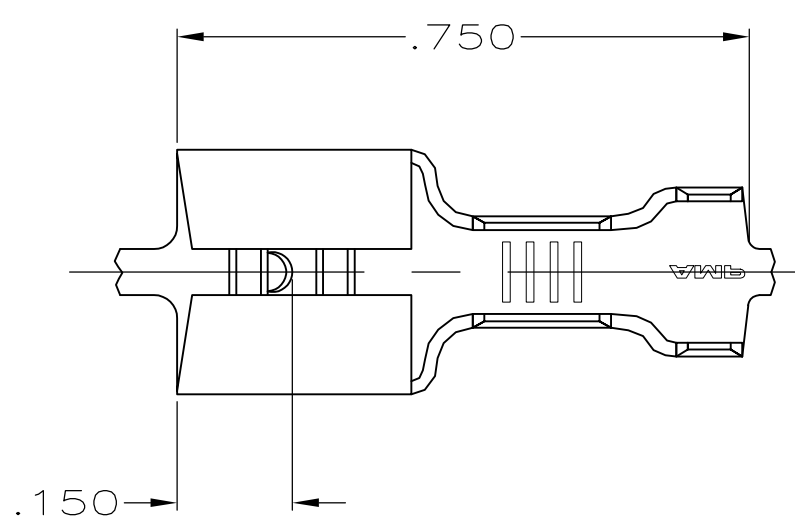


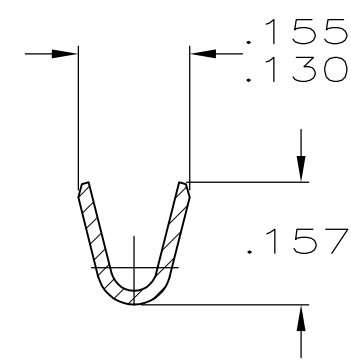
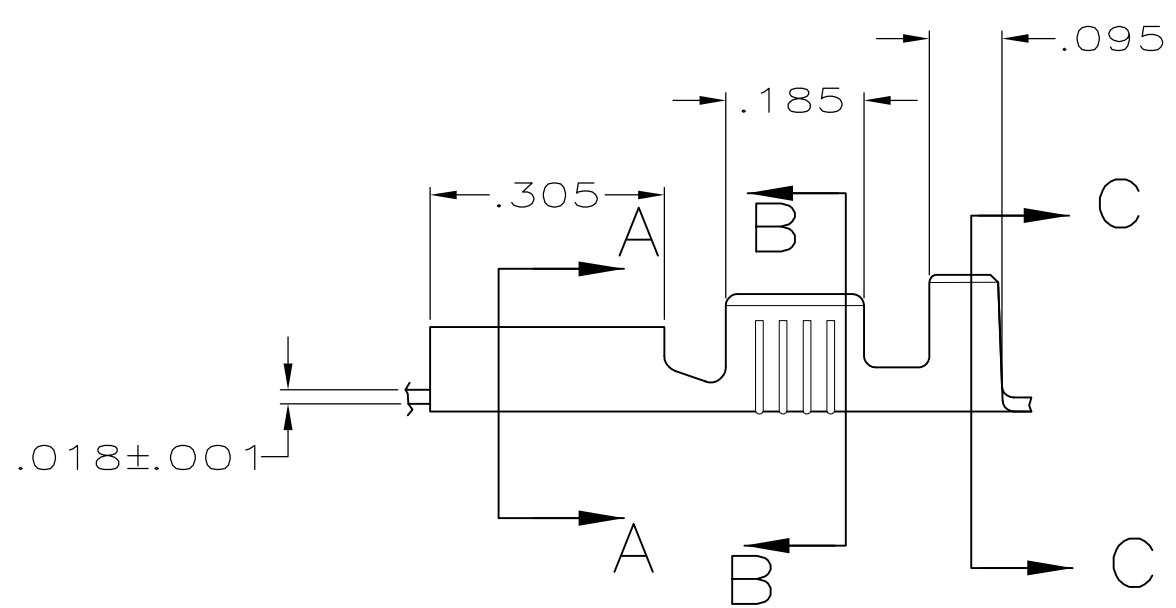
THIS DRAWING IS UNPUBLISHED. RELEASED FOR PUBLICATION
 © COPYRIGHT - By - ALL RIGHTS RESERVED.

LOC	DIST	REVISIONS			
P	LTR	DESCRIPTION	DATE	DWN	APVD
AF	50	E	REVISED PER ECR-11-018063	26DEC11	KH PD

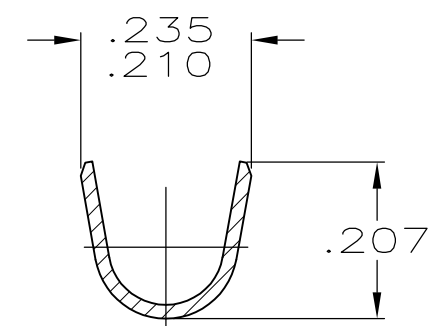
- 1 CONTINUOUS STRIP ON REELS.
- 2 ACCEPTS $.032 \pm .001$ THICK MATING TAB
- 3 ACCEPTS #18-#14 AWG WIRE SIZE.
- 4 INSULATION RANGE TO BE $.120-.170$ DIA
- 5 FEED TO BE $.840 \pm .005$.



SECTION A-A



SECTION B-B



SECTION C-C

TIN	62500-2
-	62500-1
FINISH	PART NO

THIS DRAWING IS A CONTROLLED DOCUMENT.		DWN	JR RUTH	8/30/95	TE Connectivity																
DIMENSIONS: INCHES		CHK	MS FEHER	8/30/95				NAME													
TOLERANCES UNLESS OTHERWISE SPECIFIED:		APVD	J HUZVAR	8/30/95							RECEPTACLE, FASTON, .250 SERIES										
<table border="0"> <tr><td>0 PLC</td><td>± -</td></tr> <tr><td>1 PLC</td><td>± -</td></tr> <tr><td>2 PLC</td><td>± -</td></tr> <tr><td>3 PLC</td><td>± .015</td></tr> <tr><td>4 PLC</td><td>± -</td></tr> <tr><td>ANGLES</td><td>± -</td></tr> </table>		0 PLC	± -	1 PLC				± -	2 PLC	± -				3 PLC	± .015	4 PLC	± -	ANGLES	± -	PRODUCT SPEC	
0 PLC	± -																				
1 PLC	± -																				
2 PLC	± -																				
3 PLC	± .015																				
4 PLC	± -																				
ANGLES	± -																				
MATERIAL		FINISH		WEIGHT		A3 00779		C-62500	-												
CUSTOMER DRAWING				SCALE		4:1	SHEET		1 OF 1	REV	E										